

SEEN



SUPPORTED



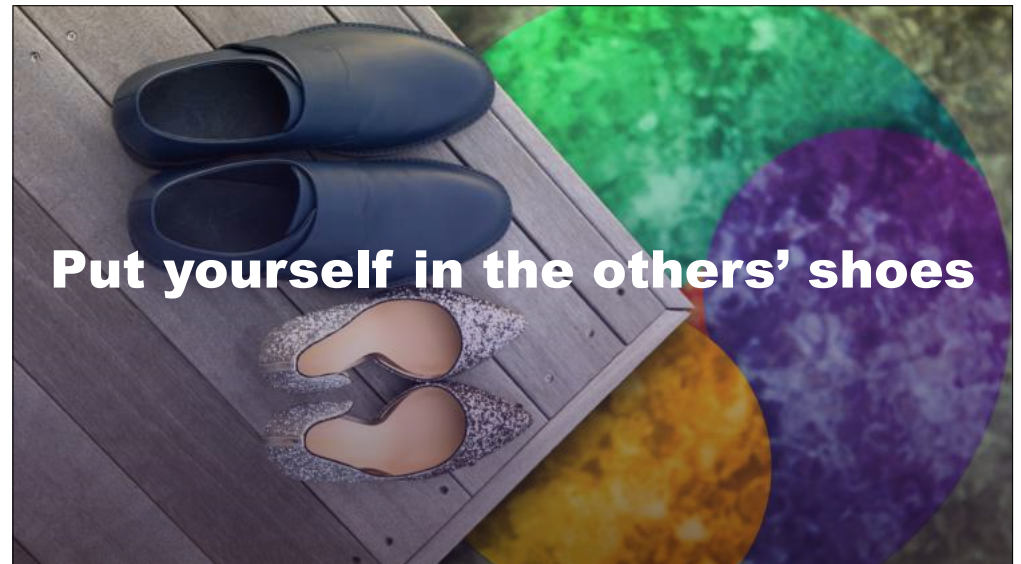
**Take a Time-Out
for a Time-In**



Conflicts at work




Put yourself in the others' shoes





Different Strokes
for Different Folks:
from **GOLDEN RULE**
to **PLATINUM RULE**

A hand is shown pointing towards the text "Complaining is great". The background consists of large, overlapping circles in shades of purple, teal, and olive green. The text is in a bold, white, sans-serif font. The hand is a light skin tone, with the index finger pointing towards the text. The person's sleeve is a grey, textured knit.

A diagram on a teal background. It features a large circle with a dashed white border. Inside this circle is a smaller circle divided into three colored segments: purple, light blue, and orange. The text "CIRCLE of INFLUENCE" is written in bold, dark green letters across the center of the inner circle. To the right of the inner circle, the text "CIRCLE of CONCERN" is written in bold, white letters. A long, dark shadow extends from the right side of the circles towards the bottom right corner.

